

在登录 Window 系统前显示登录 SSLVPN 窗口



版本	1.0
时间	2019 年 9 月 25
涉及设备及版本	FortiGate 5.0/5.2/5.4/5.6/6.0/6.2
作者	李威峰
反馈	support_cn@fortinet.com

目录

1	简介.....	3
2	配置和测试.....	3
2.1	Forticlient 5.6.版本（别的版本也可以）修改配置文件：	3
2.2	测试.....	5
3	参考资料.....	8

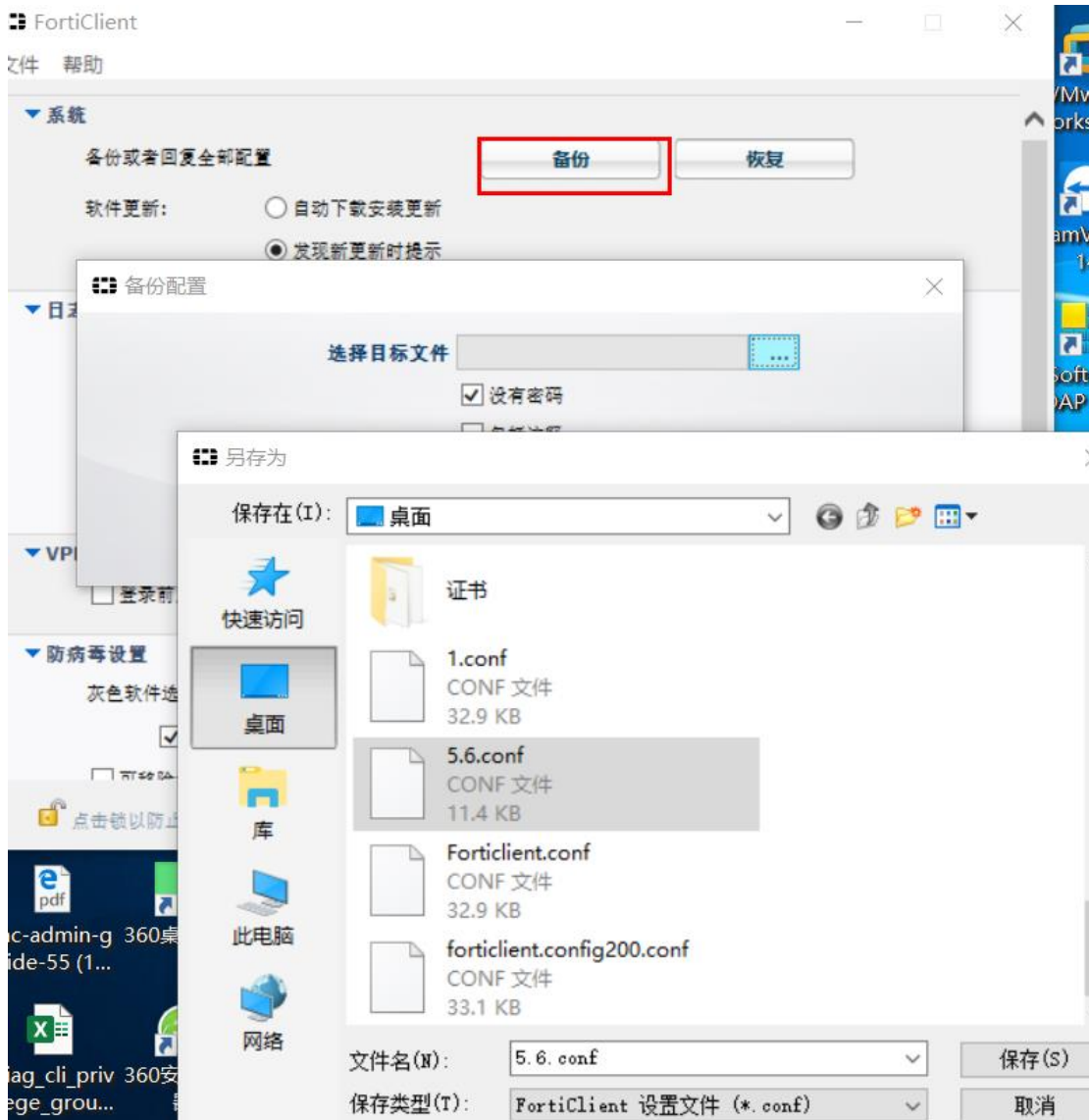
1 简介

域环境有时在远程办公时要求先登录 sslvpn，然后在登录 window 域环境，本文介绍如何在登录前 window 显示登录 SSLVPN 窗口。

2 配置和测试

2.1 Forticlient 5.6.版本（别的版本也可以）修改配置文件：

导出配置 forticlient 配置文件：



```
<!-- checkpoint_control -->
<vpn>
  <options>
    <current_connection_name>test</current_connection_name>
    <current_connection_type>ssl</current_connection_type>
    <autoconnect_tunnel>test</autoconnect_tunnel>
    <autoconnect_only_when_offnet>0</autoconnect_only_when_offnet>
    <keep_running_max_tries>0</keep_running_max_tries>
    <disable_internet_check>0</disable_internet_check>
    <save_password>0</save_password>
    <minimize_window_on_connect>1</minimize_window_on_connect>
    <allow_personal_vpns>1</allow_personal_vpns>
    <disable_connect_disconnect>0</disable_connect_disconnect>
    <show_vpn_before_logon>1</show_vpn_before_logon>
    <use_windows_credentials>0</use_windows_credentials>
    <use_legacy_vpn_before_logon>0</use_legacy_vpn_before_logon>
    <show_negotiation_wnd>0</show_negotiation_wnd>
    <vendor_id />
  </options>
  <sslvpn>
    <options>
```

修改:

```
<vpn>
```

```
<options>
```

```
<current_connection_name>test</current_connection_name>
```

```
<current_connection_type>ssl</current_connection_type>
```

```
<autoconnect_tunnel>test</autoconnect_tunnel>
```

```
<autoconnect_only_when_offnet>0</autoconnect_only_when_offnet>
```

```
<keep_running_max_tries>0</keep_running_max_tries>
```

```
<disable_internet_check>0</disable_internet_check>
```

```
<save_password>0</save_password>
```

```
<minimize_window_on_connect>1</minimize_window_on_connect>
```

```
<allow_personal_vpns>1</allow_personal_vpns>
```

```
<disable_connect_disconnect>0</disable_connect_disconnect>
```

```
<show_vpn_before_logon>1</show_vpn_before_logon> 修改这个 0 为 1
```

```
<use_windows_credentials>0</use_windows_credentials>
```

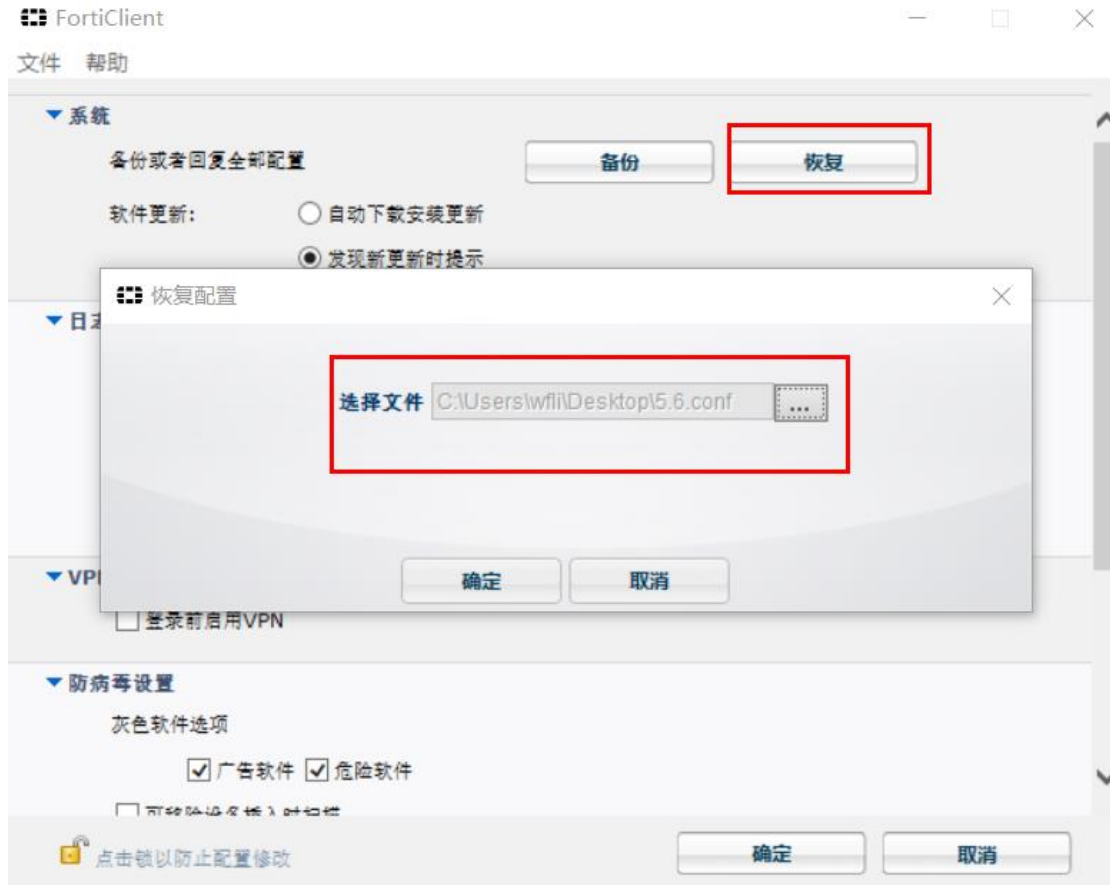
```
<use_legacy_vpn_before_logon>0</use_legacy_vpn_before_logon>
```

```
<show_negotiation_wnd>0</show_negotiation_wnd>
```

```
<vendor_id />
```

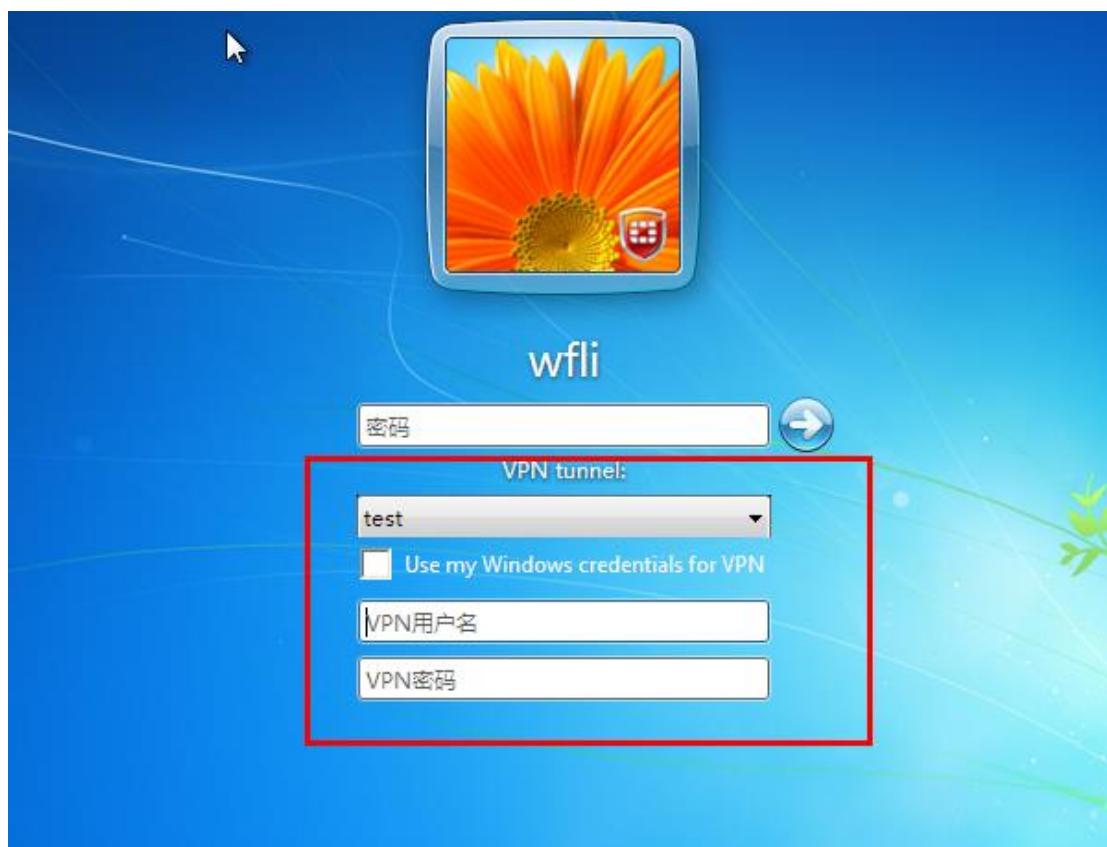
```
</options>
```

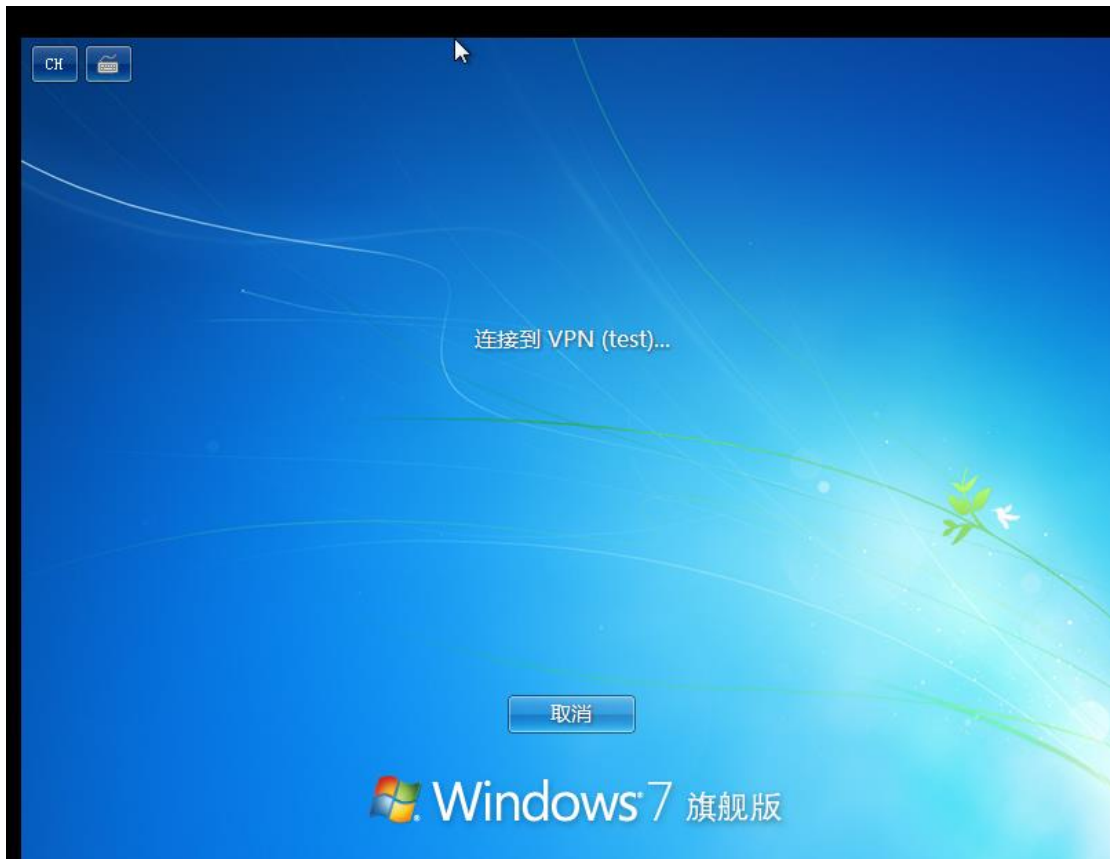
然后再导入把修改后的配置文件导入 Forticlient。



2.2 测试

开机后在 window 登录界面会同时出现 SSLVPN 登录界面，如下：





The screenshot shows the Fortinet management console interface. On the left is a navigation menu with categories like Security Fabric, FortiView, Network, System Management, Policy & Objects, Security Profiles, Virtual Networks, Users & Devices, WiFi & Switch Controllers, Logs & Reports, and Monitoring. The Monitoring section is expanded, showing options like Route Monitoring, DHCP Status Monitoring, SD-WAN Monitoring, Load Balancing Monitoring, FortiGuard Configuration, IPsec Monitoring, SSL-VPN Monitoring (highlighted), Firewall User Monitoring, and User Isolation Monitoring. The main content area displays a table with a 'Refresh' button and a single data row. The table has columns for Username, Last Login Time, Remote Host, and Activate Connection. The data row shows 'test1', 'Fri Sep 20 16:34:50 2019', '192.168.10.17', and '隧道: 10.212.134.200'.

刷新	用户名	最后登录时间	远程主机	激活连接
	test1	Fri Sep 20 16:34:50 2019	192.168.10.17	隧道: 10.212.134.200

3 参考资料